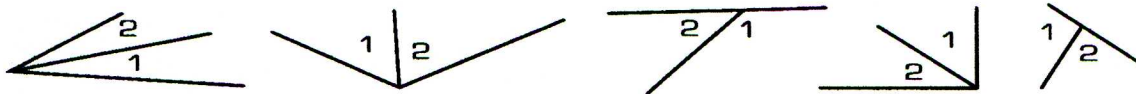


**ACTIVITY 3A (CONTINUED)**  
**CONSTRUCTING ANGLES**

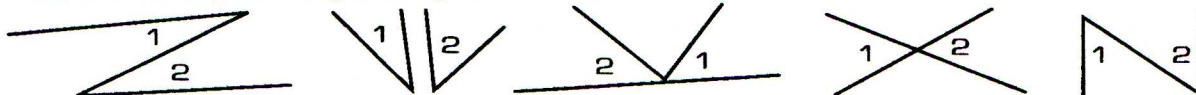
111-16

5. Read and complete the following concept card:

These are adjacent angles (angles 1 and 2):



These are not adjacent angles (angles 1 and 2):

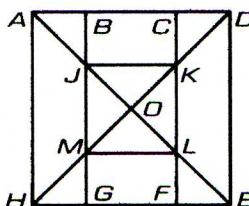


Which of these are adjacent angles (angles 1 and 2)?



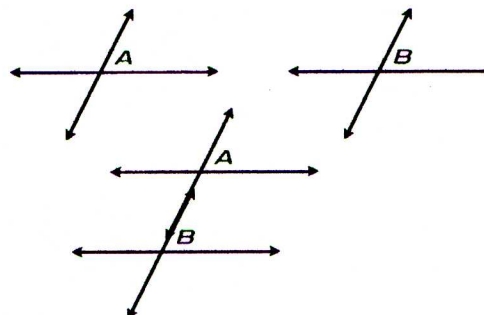
Using your model angles, create a pair of adjacent angles. Draw a sketch of your result.

Find and list pairs of adjacent angles in the figure on the right.



If you were to describe a pair of adjacent angles to a friend over the telephone, what would you say?

6. Optional: Make two model sets of vertical angles by cutting out four straight angles. Join each pair of straight angles with a paper fastener. Now place one model on top of the other and slide one above the other to create parallel lines cut by a transversal. Can you discover any pairs of congruent angles? Draw a sketch and list all pairs of congruent angles.



Change the position of your model angles. Are the pairs of angles still congruent?

What conjectures would you make about pairs of angles formed by parallel lines and a transversal?