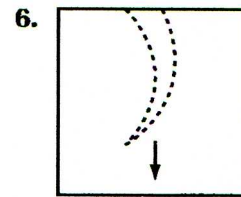
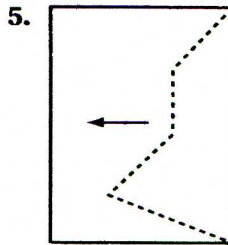
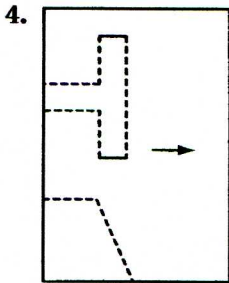
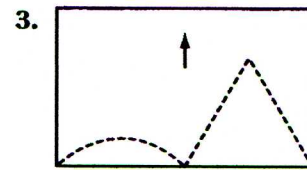
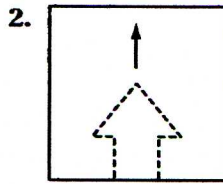
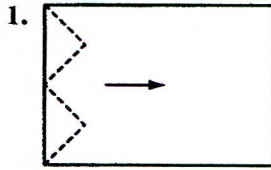


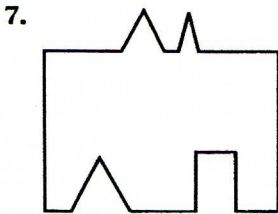
Making Figures for Tessellations

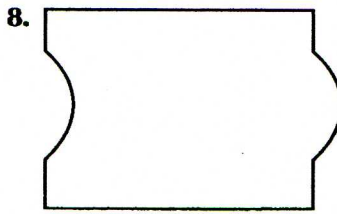
iii Explore

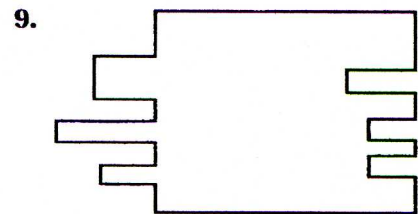
Make the tessellation shape described by each pattern. Then form two rows of a tessellation.



Write *yes* or *no* to tell whether the figure forms a tessellation.







Mixed Applications

10. Draw a rectangle. Then mark a part of one side to be cut out. Translate that part to the other side. Then draw at least two rows of the tessellation your design would produce.

11. A "2-by-4" piece of lumber is really $3\frac{1}{2}$ in. \times $1\frac{1}{2}$ in. Find the area of a cross section of a 2-by-4.

12. A baker has 5 kg of sugar. She uses 1.8 kg in one recipe and 2.2 kg in another. Does she have enough sugar left for a cake that needs 0.8 kg? Explain.

13. Four used trucks have the following prices: \$15,595; \$16,300; \$19,500; and \$21,650. What are the mean and the median?
